

MXY Stage XY-01-0110-30

# MXY Stage XY-01-0110-30

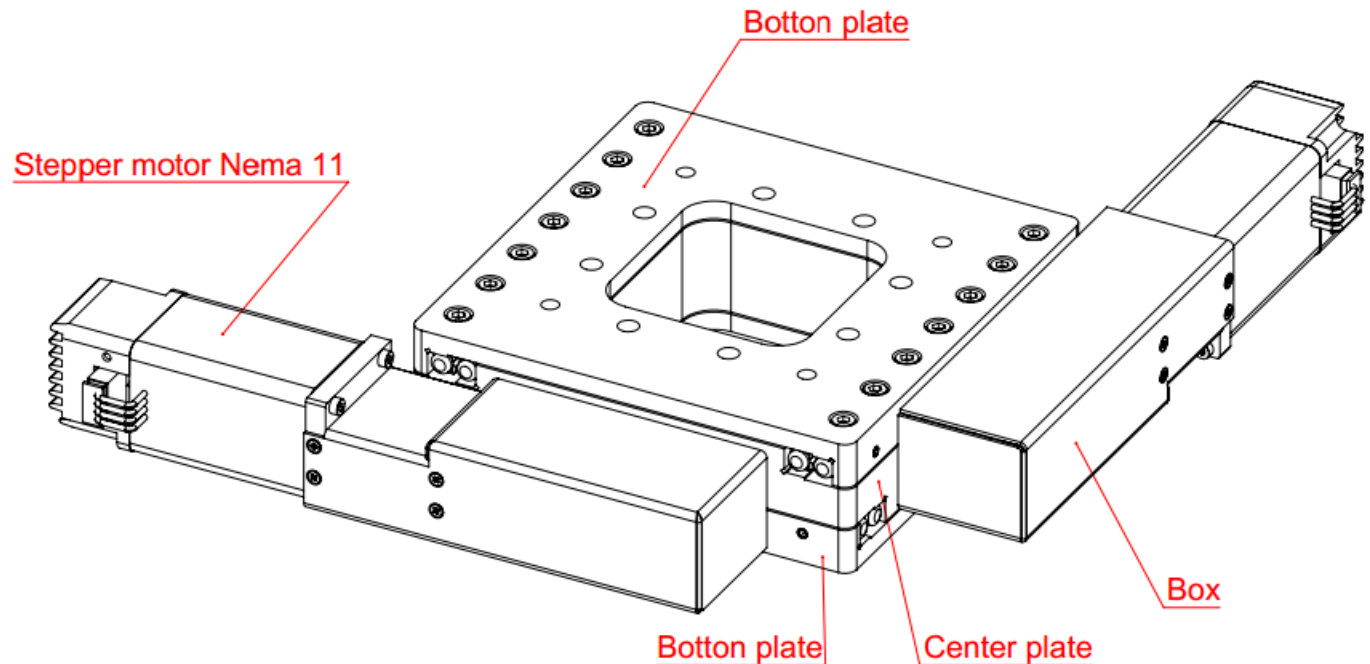
## Structure

**Travel Range:**  
30mm × 30mm

**Table Size:**  
110mm × 110mm

**Guide Rail:**  
Crossed Roller  
Guide

**Driving System:**  
Ball Screw



# MXY Stage XY-01-0110-30

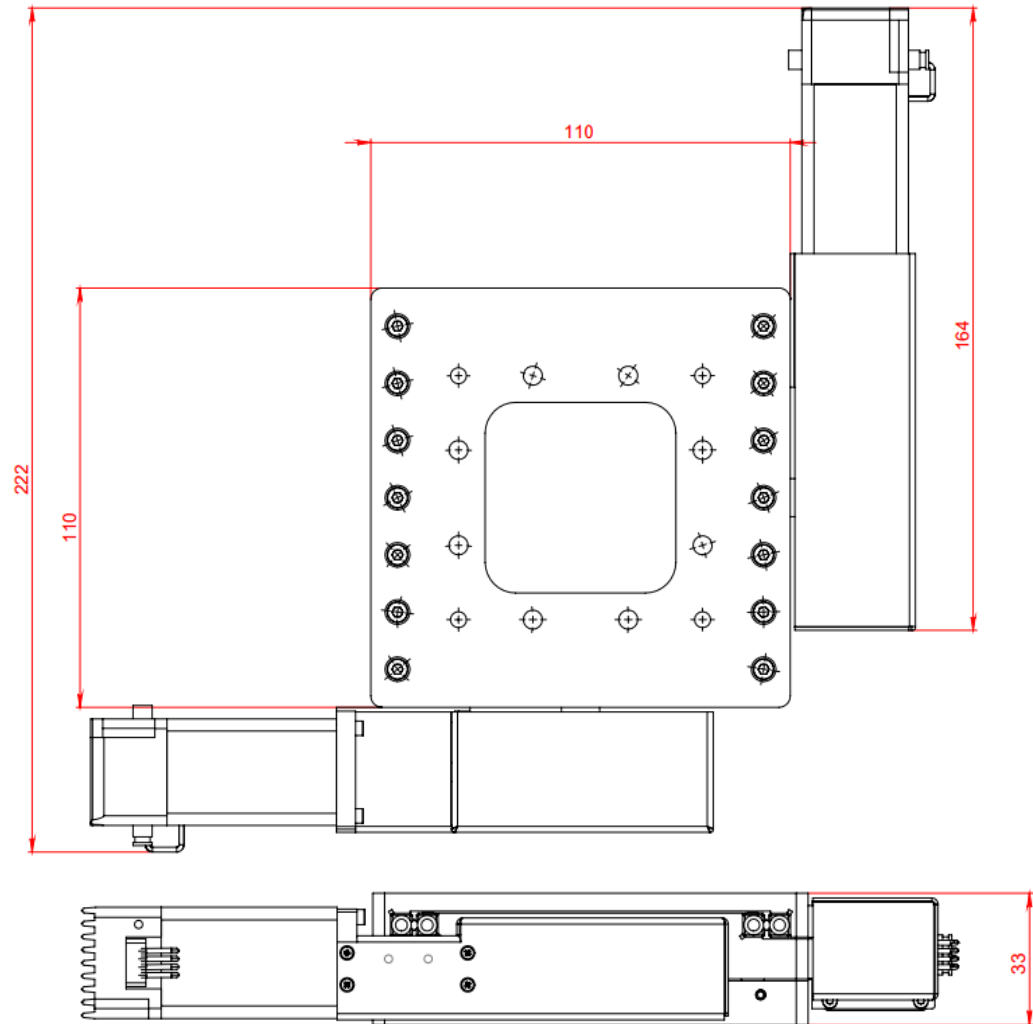
**Screw Pitch:**  
1mm

**Standard  
Motor :** NEMA 11  
Step Motor

**Material:**  
Aluminum Alloy

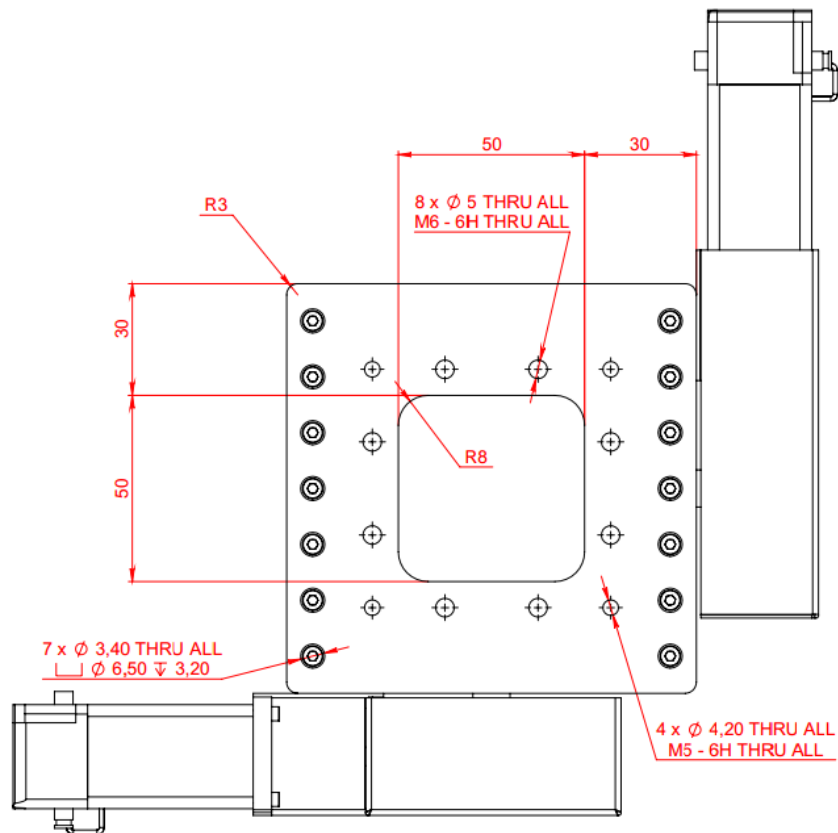
**Surface  
Treatment:** Black  
Anodized

**Net Weight:**  
2.12kg

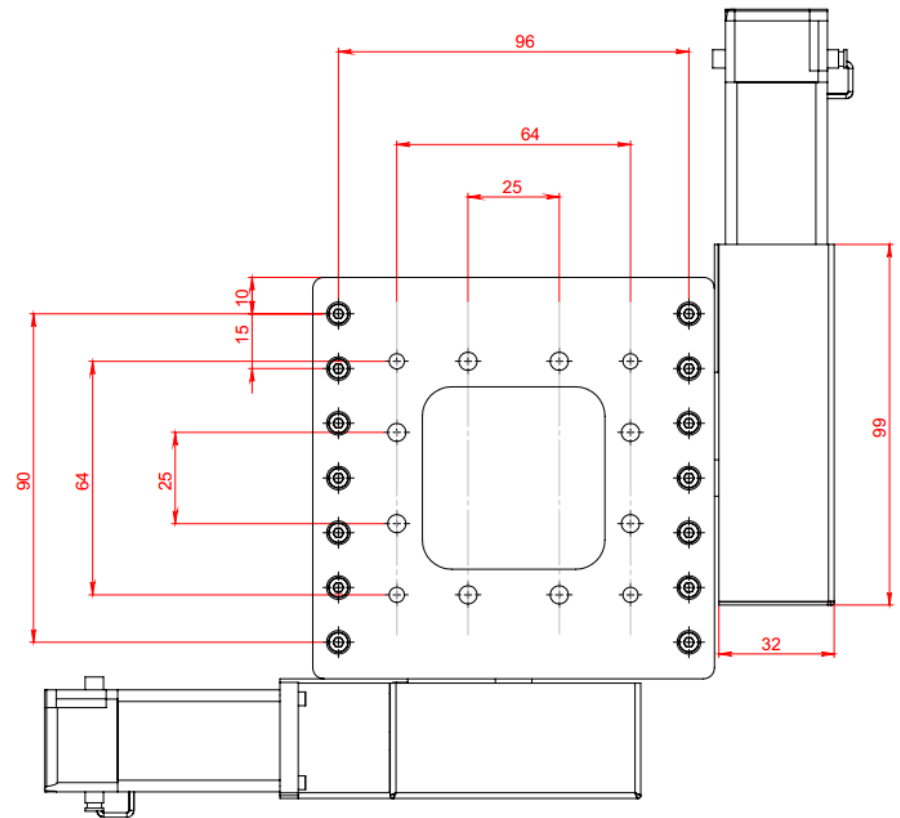


# MXY Stage XY-01-0110-30

## Fastener Holes



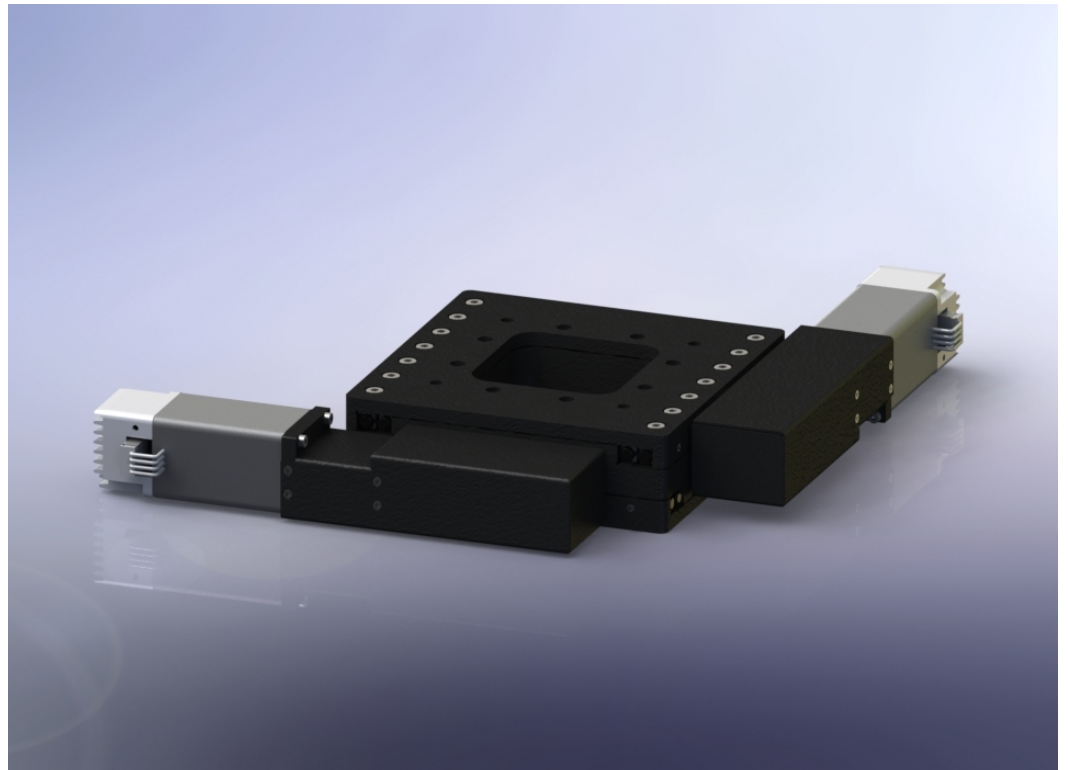
## Basic dimensions

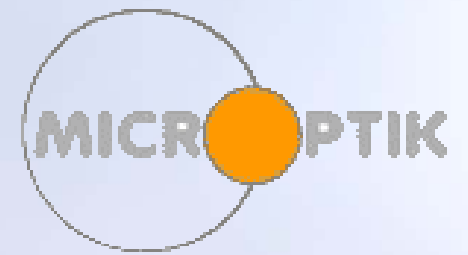


# MXY Stage XY-01-0110-30

## Feature

- 1) Equipped with step motor
- 2) Two axis integral design, compact structure, high orthogonality
- 3) High quality ball screw transmission; Good repeatability and big driving force
- 4) Use high precision crossed roller guide, smooth motion and high load capacity
- 5) Step motor and ball screw connected with high quality elastic coupler; Low noise transmission
- 6) Zero position and limit switch at both sides, easy for accurate positioning and protecting the stage
- 7) Central thru opening for light through and glass sheet can be mounted on it
- 8) There are threaded holes and thru holes on the base, easy for mounting





MXY Stage XY-01-0110-30

[www.microptik.com](http://www.microptik.com)    [info@microptik.eu](mailto:info@microptik.eu)